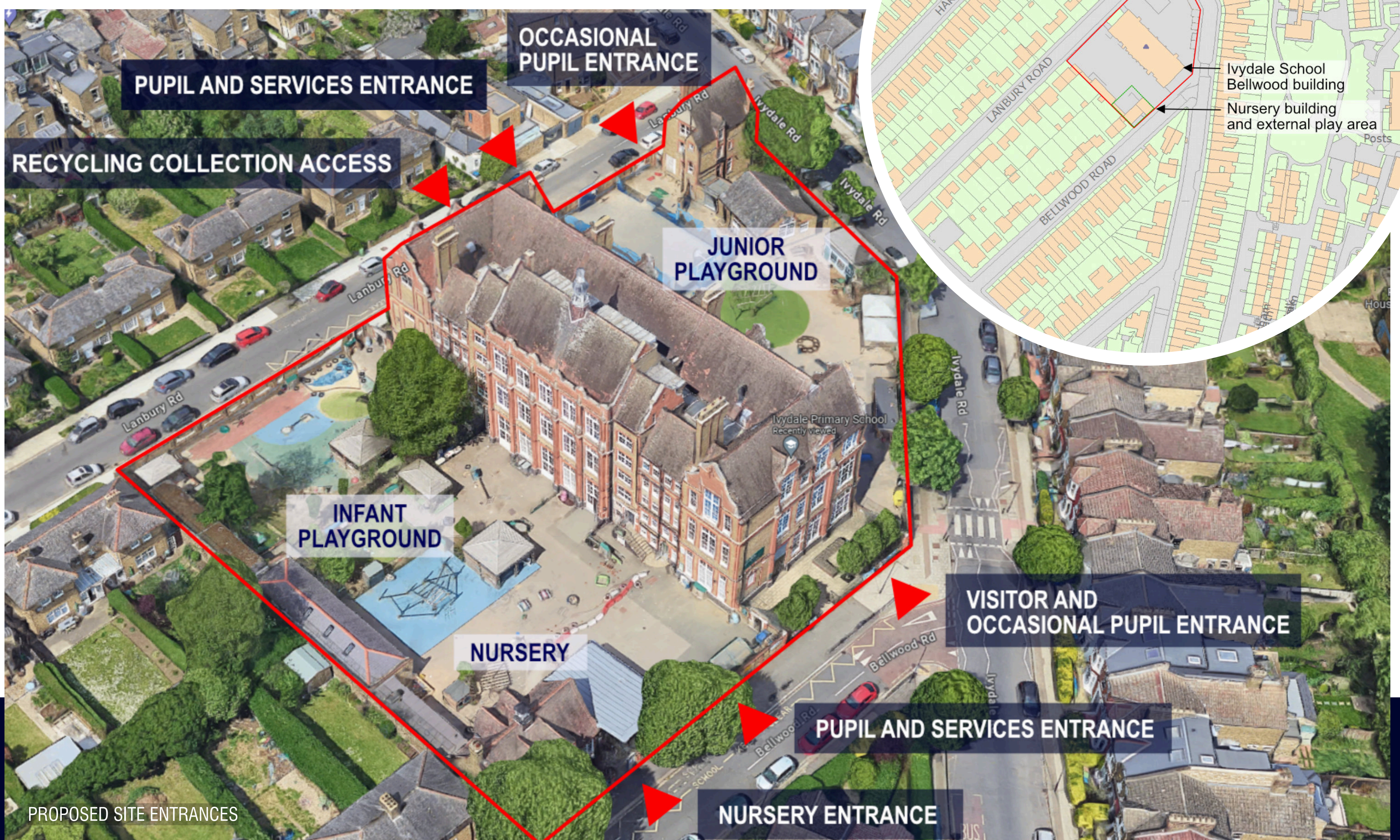


IVYDALE PRIMARY SCHOOL

EXISTING SITE AND PROPOSED IMPROVEMENTS



Ivydale School is nearly 137 years old. The Ivydale Road Elementary School opened in 1888 in temporary iron buildings near the current site with 53 children, though this number more than doubled in size within four weeks. Although one school, it comprised two departments, each with its own headteacher: one for boys and one for girls and infants. Almost immediately the buildings proved too

small and this, combined with the national introduction of free schooling in 1891, led to the construction of a new building that was finished the same year at the cost of £30,000.

In August 1892 the children and staff moved into the new three story building with the school officially opened in

October of that year. Further classrooms were added at a later date - a laundry room for the girls' and a Manual Training Centre for the boys' department.

More fascinating information about the history of Ivydale School is available on the school website (<https://www.ivydaleschool.co.uk/our-history>).

IVYDALE PRIMARY SCHOOL

PROPOSED GROUND FLOOR PLAN



A planning application is being submitted to Southwark Council in relation to the refurbishment of the existing Ivydale Primary School- Bellwood Building. This presentation explains the planned proposals and in response to the existing building, site and setting

Ivydale Primary School is currently designed to accommodate 4 forms of entry (4FE i.e. 4 classes per year group) and accommodation is arranged across two sites. This original "board school" site has a main entrance on Bellwood Road and is known as the "Bellwood Building". The other site, with a main entrance on the nearby Inverton Road and known as the "Inverton Building", is a 2 storey new build completed in 2018.

After thorough consideration, the council and school have been undertaking a consultation process for reducing the proposed admission number from 90 to 60 pupils (2 Forms of Entry) per year group. Following a building analysis of both sites to compare the suitability for accommodating a 2 Form entry primary school, it was concluded that the Bellwood site is more suitable. It provides larger internal and external areas, offering flexibility for classroom space, play areas and outdoor learning for all age groups. There has been a successful 2 form entry school on this site for over a hundred years.

The school is well provided with "additional" spaces that have been put into use for specialist activities such as

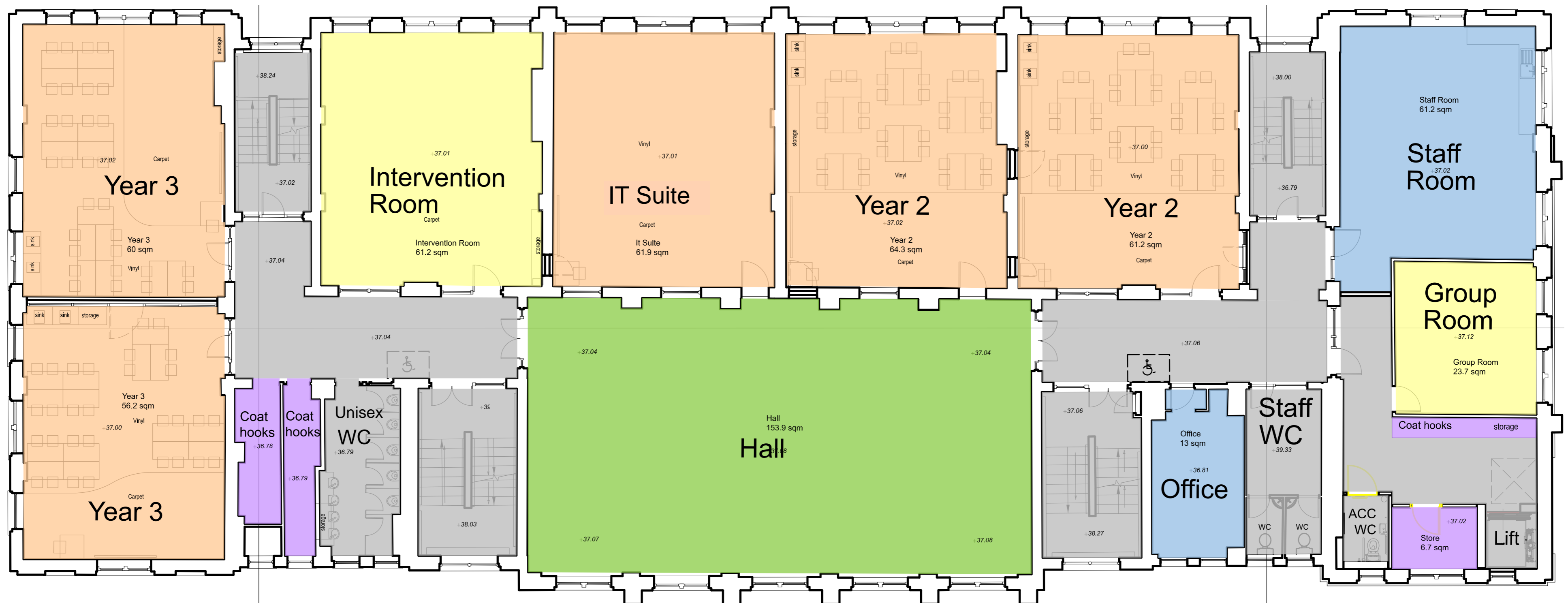
music or practical DT/ science space.

The three equally sized stacked halls exceed the number and area that would typically be recommended by BB103 however the number and arrangement will enable more flexible use that should be a benefit to the school.

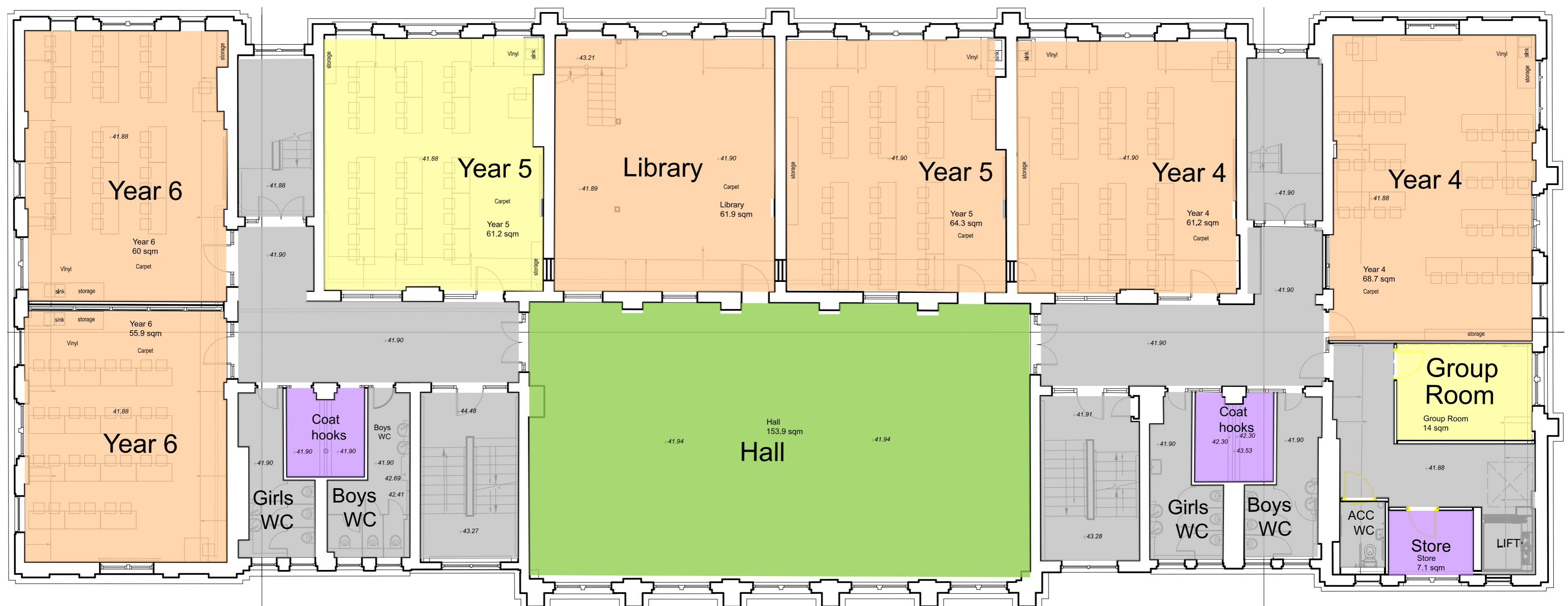
The Library is on the third floor and has been beautifully refurbished. Most SEN or group rooms are in converted classrooms or on mezzanines. Location of these has been agreed with the school leadership along with Staff/ admin spaces and storage spaces, that significantly exceed the recommended BB103 area.

IVYDALE PRIMARY SCHOOL

PROPOSED FIRST AND SECOND FLOOR PLANS



PROPOSED FIRST FLOOR PLAN



PROPOSED SECOND FLOOR PLAN

LEGEND			
	Basic Teaching Area		Non-Net Area (Spaces)
	Large Spaces		Building Main Entrance
	Learning Resource Areas		Building Secondary Entrance
	Staff & Administration Areas		Secure Line
	Storage		

The scope of the proposed refurbishment work to the main 3 storey building at the centre of the site and single storey building on the Bellwood Road Boundary (former children's centre) includes the following:

- Kitchen relocated from first floor to ground floor for improved access + servicing
- Accessibility improvements- particularly a new internal platform lift to the main building and additional accessible WCs
- Classroom Refurbishment and relocating Reception class

to current Nursery location and moving Year 1 to the ground floor

- Refurbishment of the existing children's centre building to accommodate the Nursery class
- Heating and lighting upgrade to improve efficiency and sustainability
- Acoustic improvements
- Internal decoration
- New furniture and fittings where required

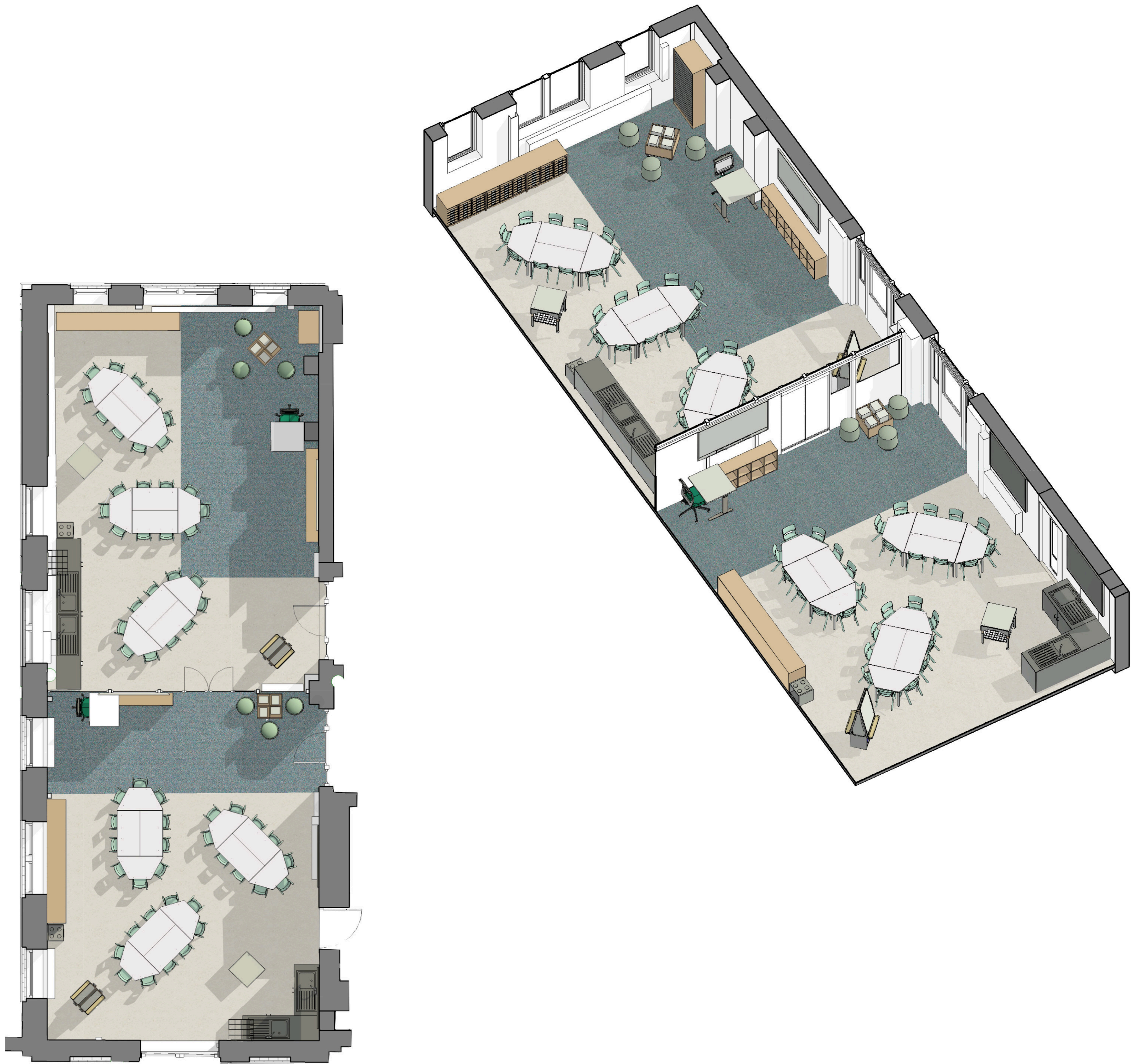
- Existing historic fabric retained and refurbished where required

- All pedestrian and vehicle access points on the boundary will be retained as existing although day to day usage will be adjusted to respond to the drop off and pick up needs of all age groups from 3-11 years old

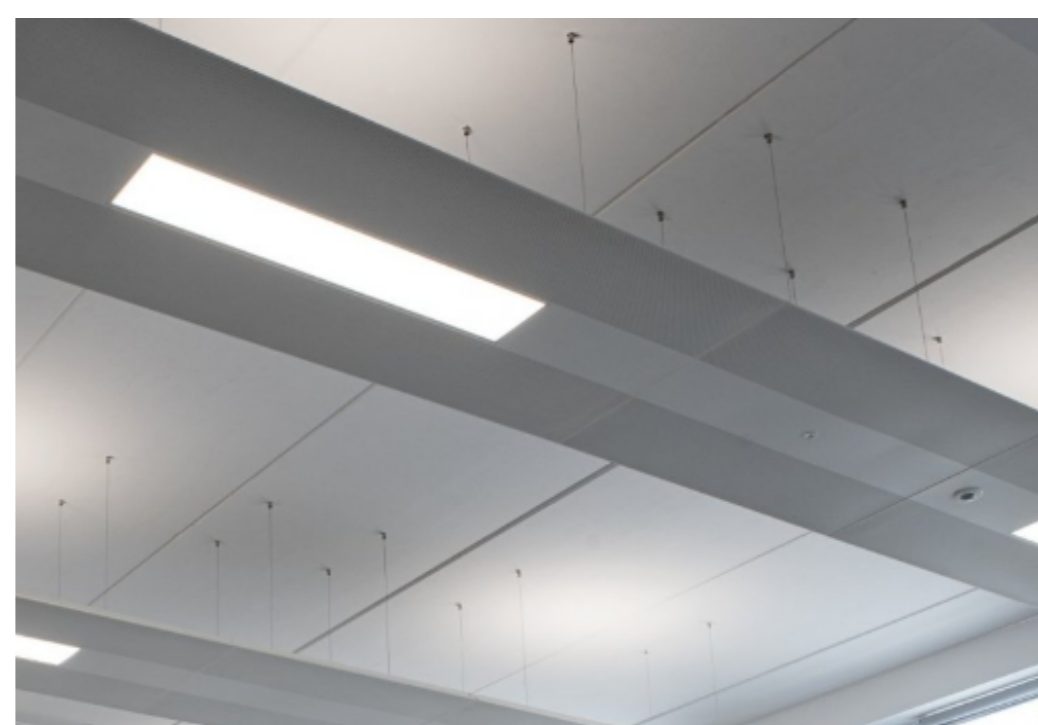
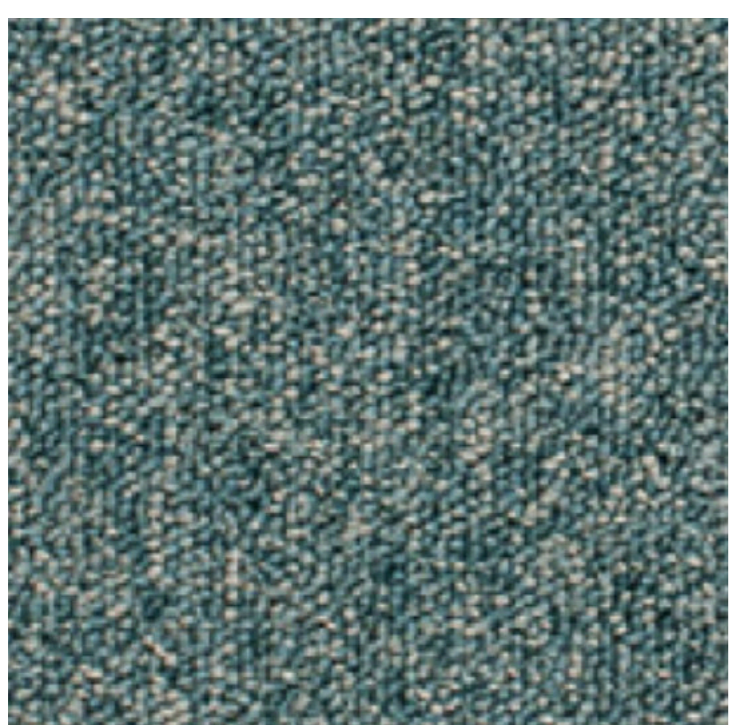
The school is well provided with "additional" spaces that have been put into use for specialist activities such as music or practical DT/ science space.

IVYDALE PRIMARY SCHOOL

PROPOSED TYPICAL INFANT CLASSROOM

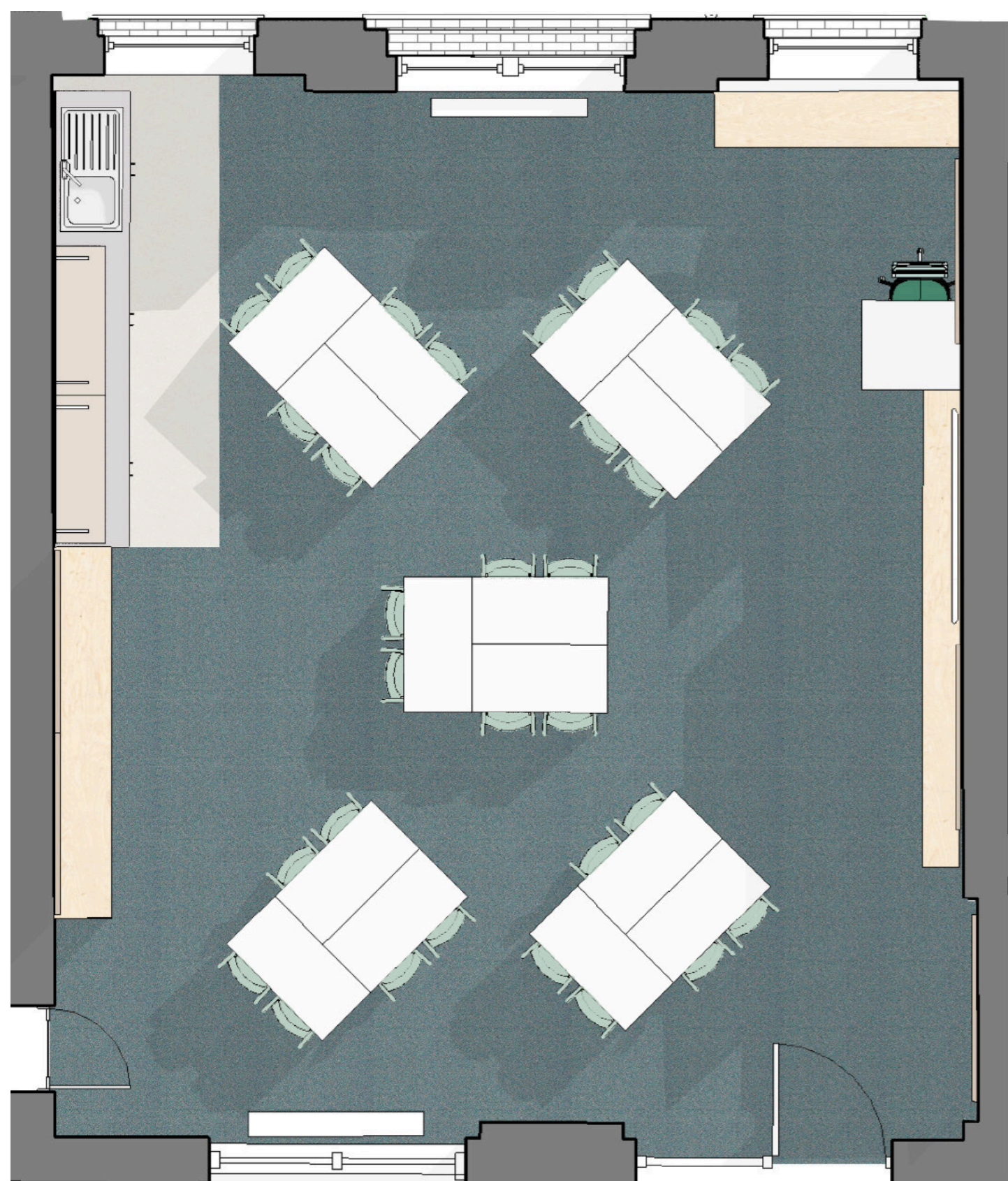
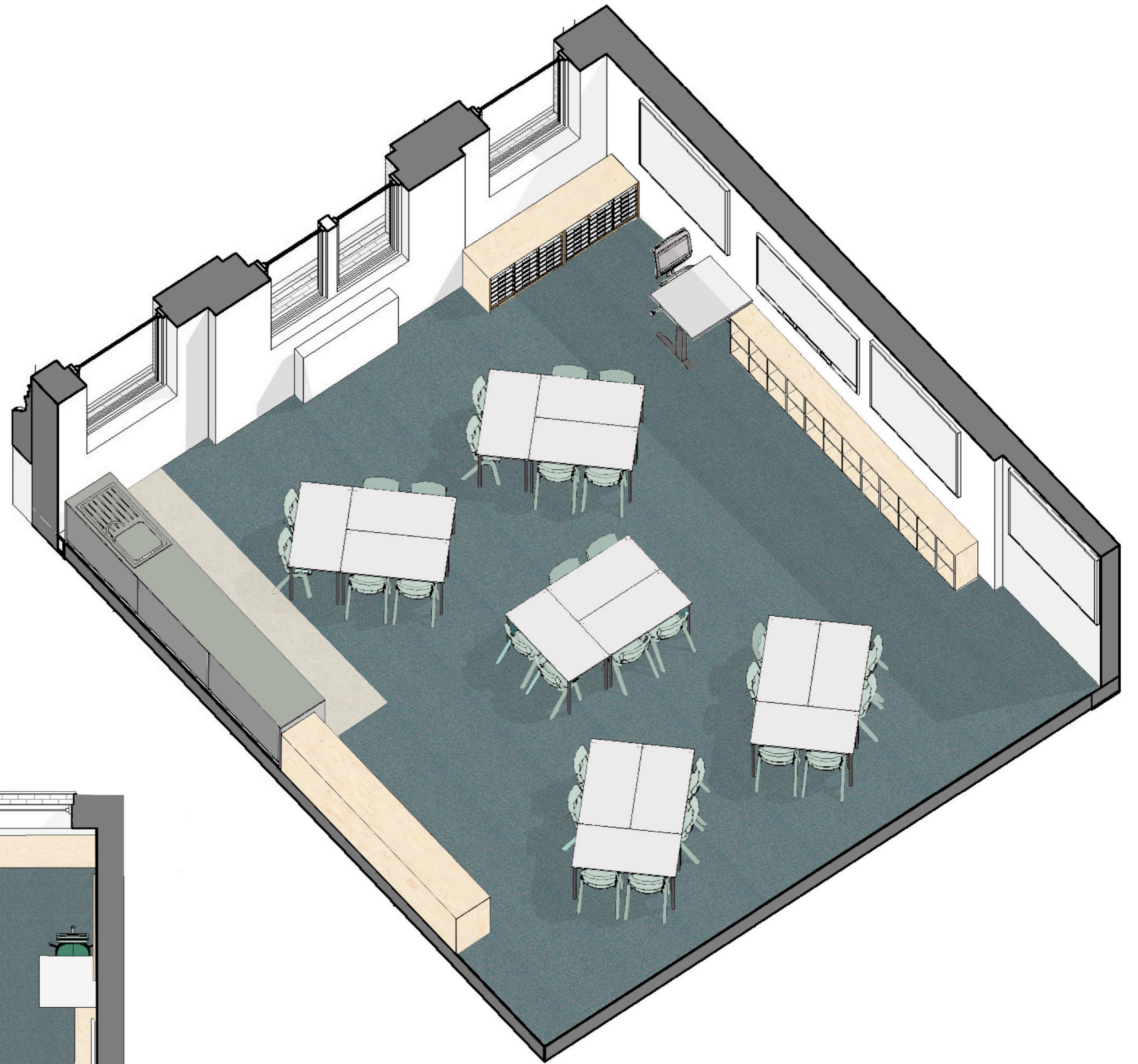


PROPOSED FINISHES

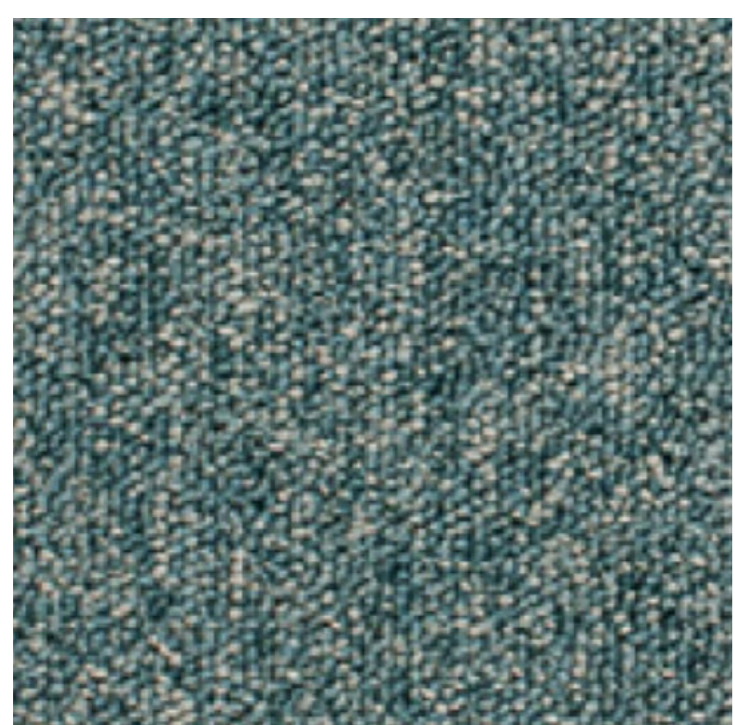


IVYDALE PRIMARY SCHOOL

PROPOSED TYPICAL JUNIOR CLASSROOM

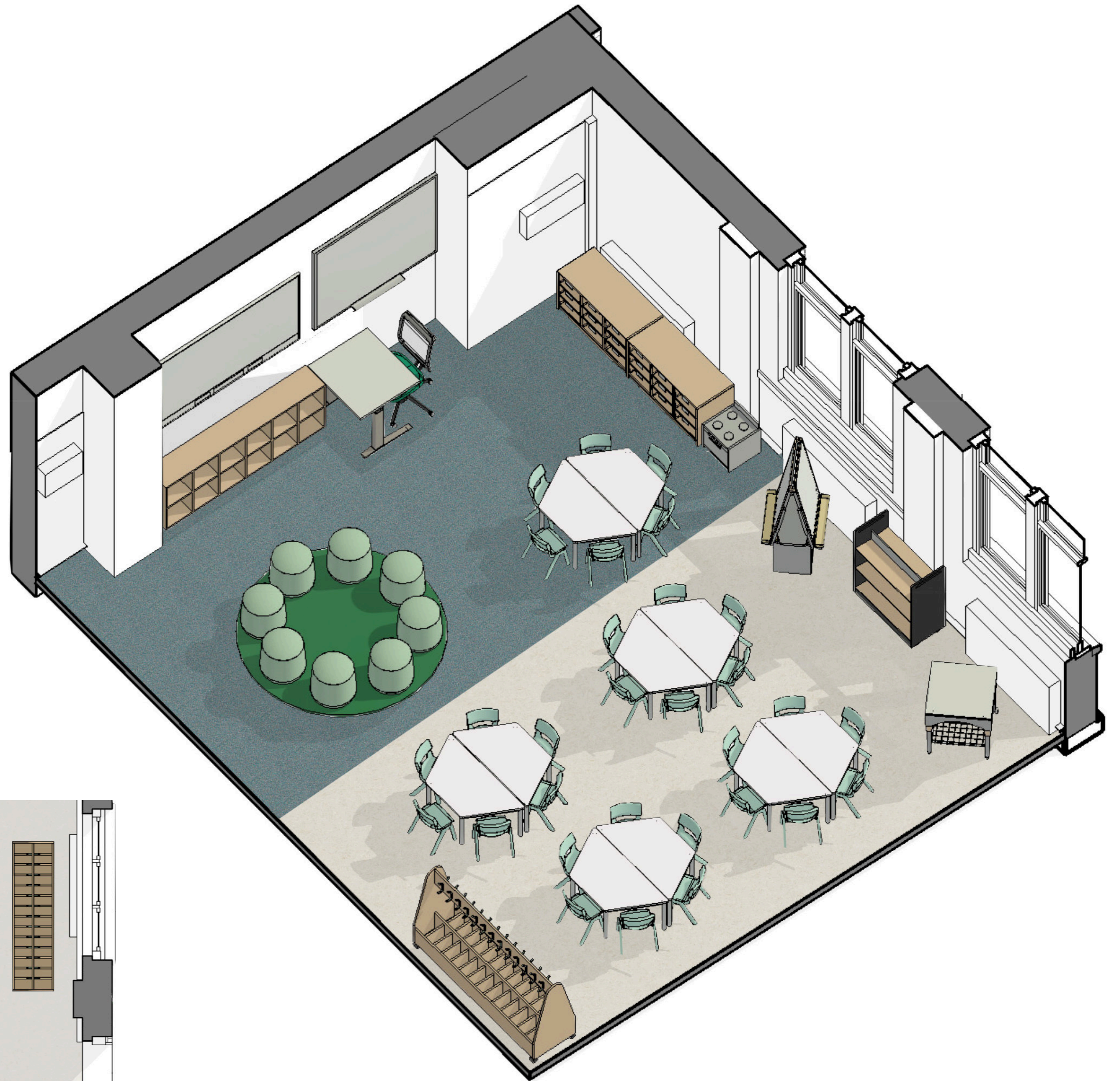


PROPOSED FINISHES



IVYDALE PRIMARY SCHOOL

PROPOSED NURSERY



PROPOSED FINISHES

